



# MONTAGEHINWEIS

ASSEMBLY INSTRUCTIONS  
INSTRUCTION DE MONTAGE

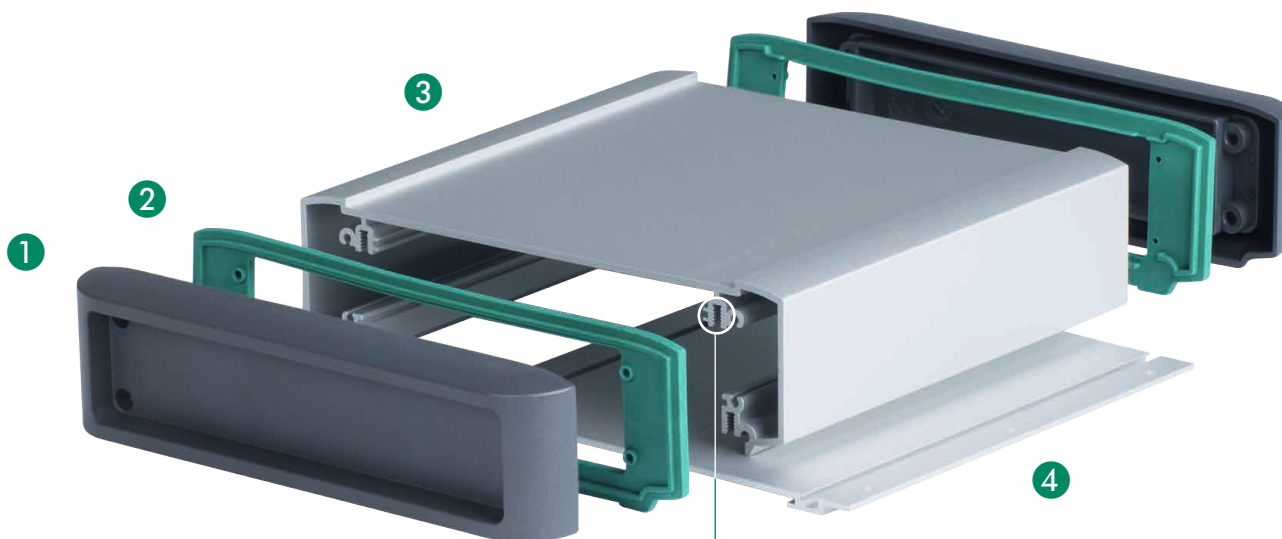
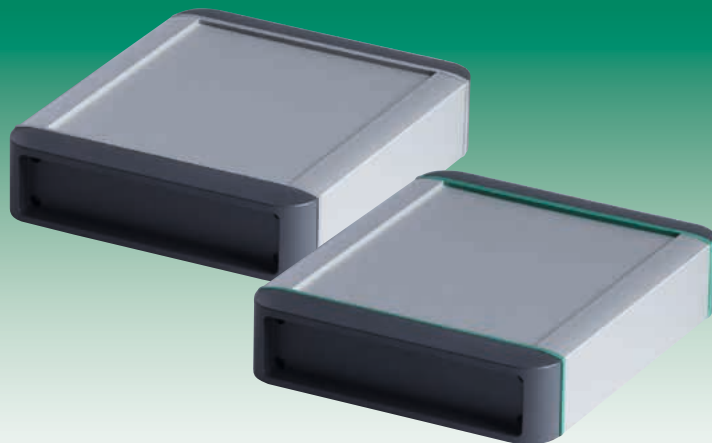


# SMART-TERMINAL

Montagehinweis / Assembly Instructions / Instruction de montage

GEHÄUSE / ENCLOSURE / BOITIER

SMART-TERMINAL 160	SMART-TERMINAL 200	SMART-TERMINAL 240
B 34 07 011	B 34 07 021	B 34 07 031
B 34 07 012	B 34 07 022	B 34 07 032



## ZUBEHÖR / ACCESSORY / ACCESSOIRE

- A 03 30 080 Schraube M3 x 8 mm (T10), zur Befestigung von Leiter-/ Montageplatten
- A 03 30 080 Screw M3 x 8 mm (T10), for fastening PCBs and board assemblies
- A 03 30 080 Vis M3 x 8 mm (T10), pour la fixation des circuits imprimés et des plaques de montage

## Lieferumfang

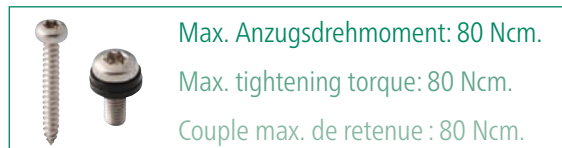
- ① Abdeckkappen-Set
  - ② Designdichtungs-Set
  - ③ Basisprofil
  - ④ Bodenprofil
- Montage-Set

## Supply

- ① Set of side covers
  - ② Set of designer seals
  - ③ Top profile
  - ④ Base profile
- Assembly kit

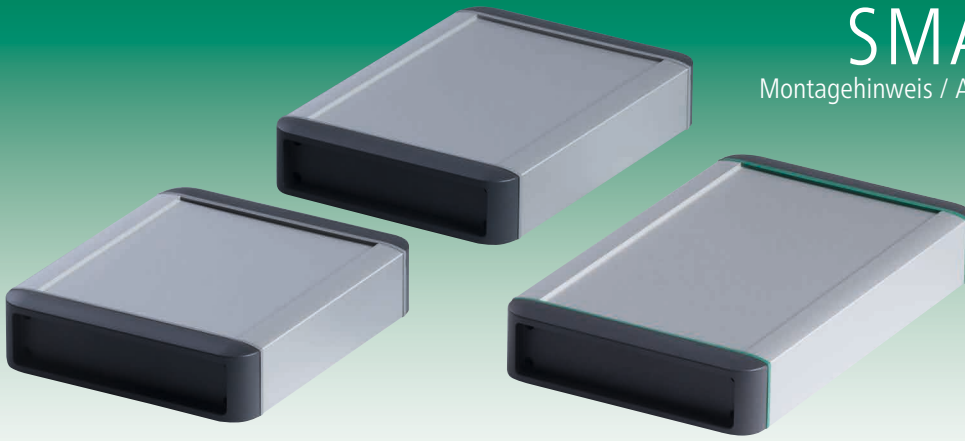
## Fourniture

- ① Jeux de couvercles
  - ② Jeu de joints
  - ③ Profil de base
  - ④ Profil inférieur
- Kit de montage



# SMART-TERMINAL

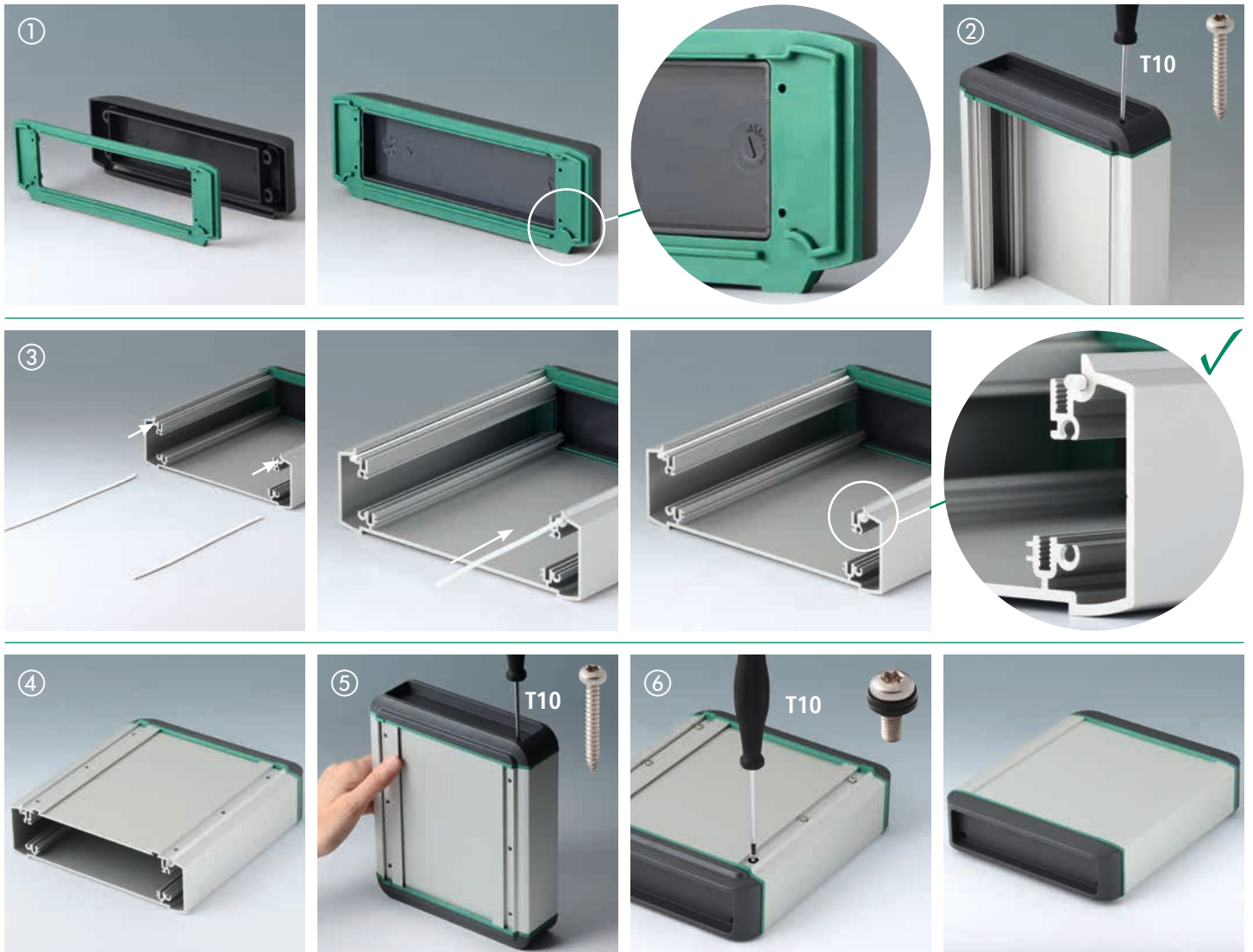
Montagehinweis / Assembly Instructions / Instruction de montage



Bitte Montagerihenfolge ① - ⑥ beachten!

Please follow the assembly sequence ① - ⑥!

Veuillez respecter l'ordre de montage ① - ⑥!



▲ Bodenprofil nur einlegen, noch nicht verschrauben.

Just insert the base profile in place, do not screw fix it yet.

Mettez simplement le profil inférieur en place ; ne le vissez pas encore.



# SMART-TERMINAL

Zubehör / Accessory / Accessoire

PULTAUFSTELLER-SET / CASE CANTING KIT / KIT SUPPORT PUPITRE

B 35 07 030

Bitte Montagereihenfolge ① - ⑦ beachten!

Please follow the assembly sequence ① - ⑦!

Veuillez respecter l'ordre de montage ① - ⑦!



⚠ Bodenprofil mit Pultaufsteller nur einlegen, noch nicht verschrauben.

Just insert the base profile in place, do not screw fix it yet.

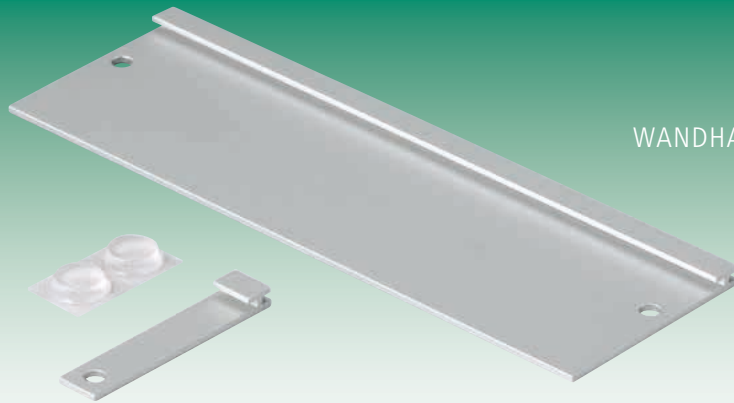
Mettez simplement le profil inférieur en place ; ne le vissez pas encore.

# SMART-TERMINAL

Zubehör / Accessory / Accessoire

WANDHALTER-SET / WALL MOUNTING KIT / JEU DE SUPPORT MURAL

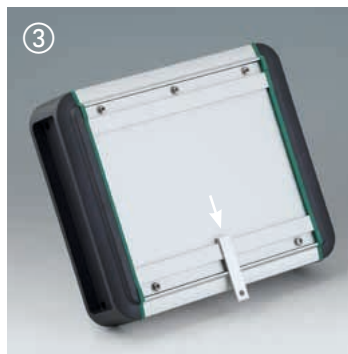
B 35 07 020



Gehäuseausrichtung im Querformat

Enclosure in horizontal orientation

Orientation du boîtier en format horizontal



Die Schrauben zur Wandbefestigung (②/⑤) sind nicht im Lieferumfang enthalten.

Wall mounting screws shown in ②/⑤ are not included.

Les vis (②/⑤) pour le montage au mur ne sont pas fournies.



GEHÄUSE  
SYSTEME

[www.okw.com](http://www.okw.com)

# MONTAGEHINWEIS

ASSEMBLY INSTRUCTIONS  
INSTRUCTION DE MONTAGE


Subject to technical modification,  
typographical and other errors  
without prior notice!


07.2018

## Hersteller / Manufacturer / Fabricant

Odenwälder Kunststoffwerke  
Gehäusesysteme GmbH  
Friedrich-List-Str. 3  
74722 Buchen/Germany

 +49 (0) 62 81 / 4 04-00

 +49 (0) 62 81 / 4 04-144

 [info@okw.com](mailto:info@okw.com)

 [www.okw.com](http://www.okw.com)